



03love Teignmouth Road, Selly Oak, Birmingham, B29 7AX £105 Per Week



2026/2027 ACADEMIC YEAR Stunning Student Accommodation Suitable for Students or Professionals

*Student summer discount – 30% off rent for July & August. Save £1,638 over the summer. Close to campus, furnished, bills package available.

FREE INTERNET

Rent: £105 pppw

LOW DEPOSIT: £400/person (based on a group of 6 people)

15-minute walk to the University of Birmingham.

Two designer bathrooms with showers and upscale fixtures.

Fully Furnished

Orthopedic mattresses

Equipped with premium appliances and mood-enhancing LED lighting.

Available: Rent with Built-in Unlimited Bills Package for only £138.68 per person per week

Lovely yet affordable 6 double bedroom student house features modern upgrades including thermal boarding, double glazing, advanced gas heating, and energy-efficient LED lighting. With a designer kitchen, elegant lounge, and proximity to the University of Birmingham, this student accommodation offers the ultimate academic experience. Secure your ideal space today for top-tier student living!

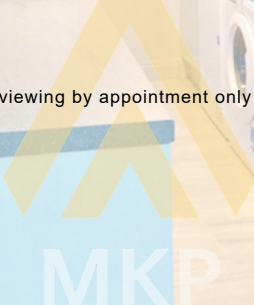
All MKP Management properties are fitted with a security alarm.

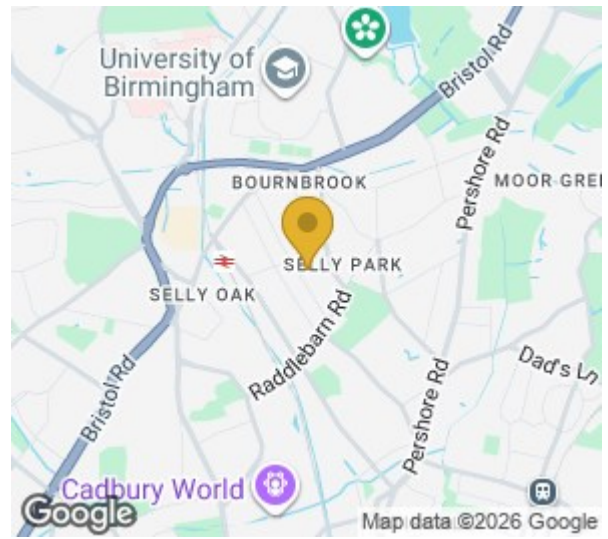
Don't miss your chance to view this exceptional property. Schedule a viewing by appointment only with MKP Management. Your dream home in Selly Oak awaits!

Viewing

Please contact our MKP MANAGEMENT Office on 0121 472 5897

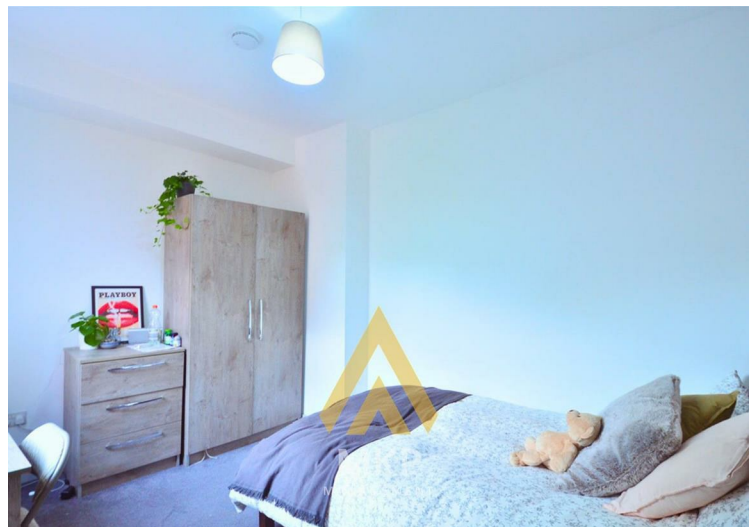
if you wish to arrange a viewing appointment for this property or require further information.





| Energy Efficiency Rating | | Current | Potential |
|---|---|-------------------------|-----------|
| Very energy efficient - lower running costs | | | |
| (92 plus) | A | | |
| (81-91) | B | | |
| (69-80) | C | | |
| (55-68) | D | | |
| (38-54) | E | | |
| (21-38) | F | | |
| (1-20) | G | | |
| Not energy efficient - higher running costs | | | |
| England & Wales | | EU Directive 2002/91/EC | 81 |

| Environmental Impact (CO ₂) Rating | | Current | Potential |
|---|---|-------------------------|-----------|
| Very environmentally friendly - lower CO ₂ emissions | | | |
| (92 plus) | A | | |
| (81-91) | B | | |
| (69-80) | C | | |
| (55-68) | D | | |
| (38-54) | E | | |
| (21-38) | F | | |
| (1-20) | G | | |
| Not environmentally friendly - higher CO ₂ emissions | | | |
| England & Wales | | EU Directive 2002/91/EC | 76 |



These particulars, whilst believed to be accurate are set out as a general outline only for guidance and do not constitute any part of an offer or contract. Intending purchasers should not rely on them as statements of representation of fact, but must satisfy themselves by inspection or otherwise as to their accuracy. No person in this firm's employment has the authority to make or give any representation or warranty in respect of the property.